



CP-400i-USB

2D Industrial Hands-free
Platform Scanner

• Excellent Identification Ability

High performance scanning module, with superior wide field-of-view, omni-directional scanning capability.

• Automatic interface detection

Enable the scanner to configure appropriate interface once connected, avoid the tedious task of scanning programming

• Convenient and Comfortable Operation

Fashionable, small and ergonomics design to provide superior operation experience, save room and boost work efficiency.

• High Quality

Adopt high quality wires and inflaming retarding materials with the international standard, recyclable and practical shell to protect the device.

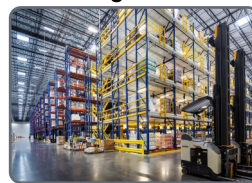
• Industrial Grade Durability

IP54 industrial grade, no worry operate device in dust and moist circumstances.

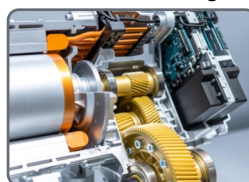
Healthcare



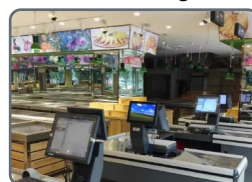
Logistics



Manufacturing



Retailing



CP-400i-USB can quickly and easily scan all kinds of printed barcode and mobile phone screen barcode, with sensitive induction module for fast induction and fast reading barcode. It optimized for many industries, such as Retail, logistics, Manufacturing, Medical store, Warehouse and other fields of applications.

TECHNICAL SPECIFICATIONS

Performance Parameters

| | |
|---------------------|--|
| Image sensor | CMOS |
| Resolution | 1280x800 pix |
| Decode capability | 1D: UPC/EAN, Code 128, Code 39, Code 39 (Full ASCII), code32, Interleaved 2 of 5, Matrix 2 of 5, Discrete 2 of 5, Codabar, Chinese 2 of 5, China Postal Code, GS1 DataBar, etc. 2D: PDF417, Micro PDF417, QR code, Micro QR, Data Matrix, Aztec, etc. |
| Scan Angle | ± 360°, ± 70°, ± 65° (Roll, Skew, Pitch) |
| Scan precision | ≥4mil |
| Depth of field | 20-650mm |
| Print contrast | ≥20% |
| Prompt mode | Buzzer, LED indicator light |
| Interface | USB, USB-COM |
| Trigger mode | Auto-induction scanning |
| Setting method | Scan configuration barcode |
| Current and voltage | 160mA (standby), 270mA (working), 5VDC±20% |

Physical Parameters

| | |
|----------------|---|
| Over dimension | L X W X H (103x105x150mm) |
| Weight | 265g |
| Material | ABS+PC environmentally friendly materials |

Environmental Parameters

| | |
|------------------------|---------------|
| Working temperature | -20 ° to 50 ° |
| Storage temperature | -40 ° to 60 ° |
| Anti-drop | 1.5m |
| Humidity | 5% to 95% RH |
| IP grade | IP54 |
| Circumstance luminance | 0-100,000Lux |